



*Serving the Justice-Involved
Population as a CalAIM
ECM Provider*

August 8, 2023

**Rebekah Kharrazi, MPH, CPH
Senior Consultant
Health Management Associates**

Agenda

1. **Welcome and Introductions**
2. **Learning Objectives**
3. **CalAIM Justice-Involved (JI) Initiatives**
4. **90-Day Pre-Release Services**
5. **Enhanced Care Management (ECM)**
6. **Serving the JI Population of Focus**
7. **Next Steps**
8. **Resources**
9. **Questions**



Welcome and Housekeeping



This webinar is being recorded



Attendance will be tracked via log-in



Send a message to the host if you cannot hear or see the slides



After the webinar you will get a copy of the PowerPoint and recording link



Participants are automatically MUTED. Please communicate via the chat



If we are unable to address your questions in today's webinar, we will address your questions in an upcoming forum



Welcome and Introductions



Karen Richmond
Medi-Cal Regional VP

Today's Presenter



**Rebekah Kharrazi, MPH, CPH
Senior Consultant
Health Management Associates**

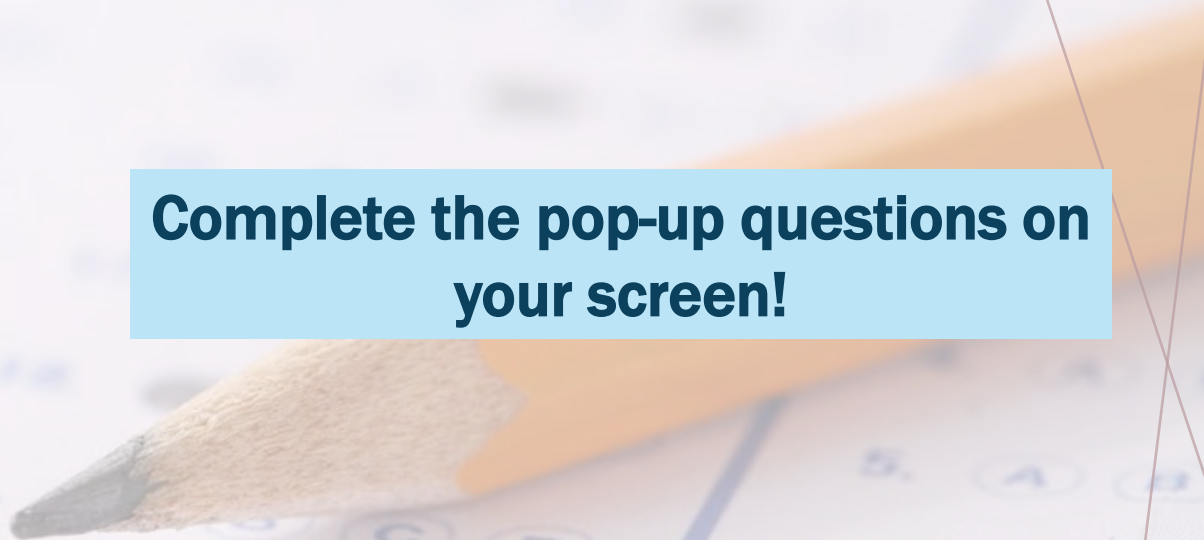
WHO IS ON TODAY'S CALL?

1. What entity do you represent?

- Sheriff's Office
- Probation Office
- California Department of Corrections and Rehabilitation
- County Behavioral Health
- County Social Services
- Community-Based Organization
- Federally Qualified Health Centers
- Providers (including hospitals and provider organizations)
- Tribal
- Other

2. What type of CalAIM provider are you?

- ECM Provider
- CS Provider
- ECM and CS Provider
- Not an ECM or CS Provider



Complete the pop-up questions on your screen!

Learning Objectives

At the end of this webinar, participants will have the ability to:

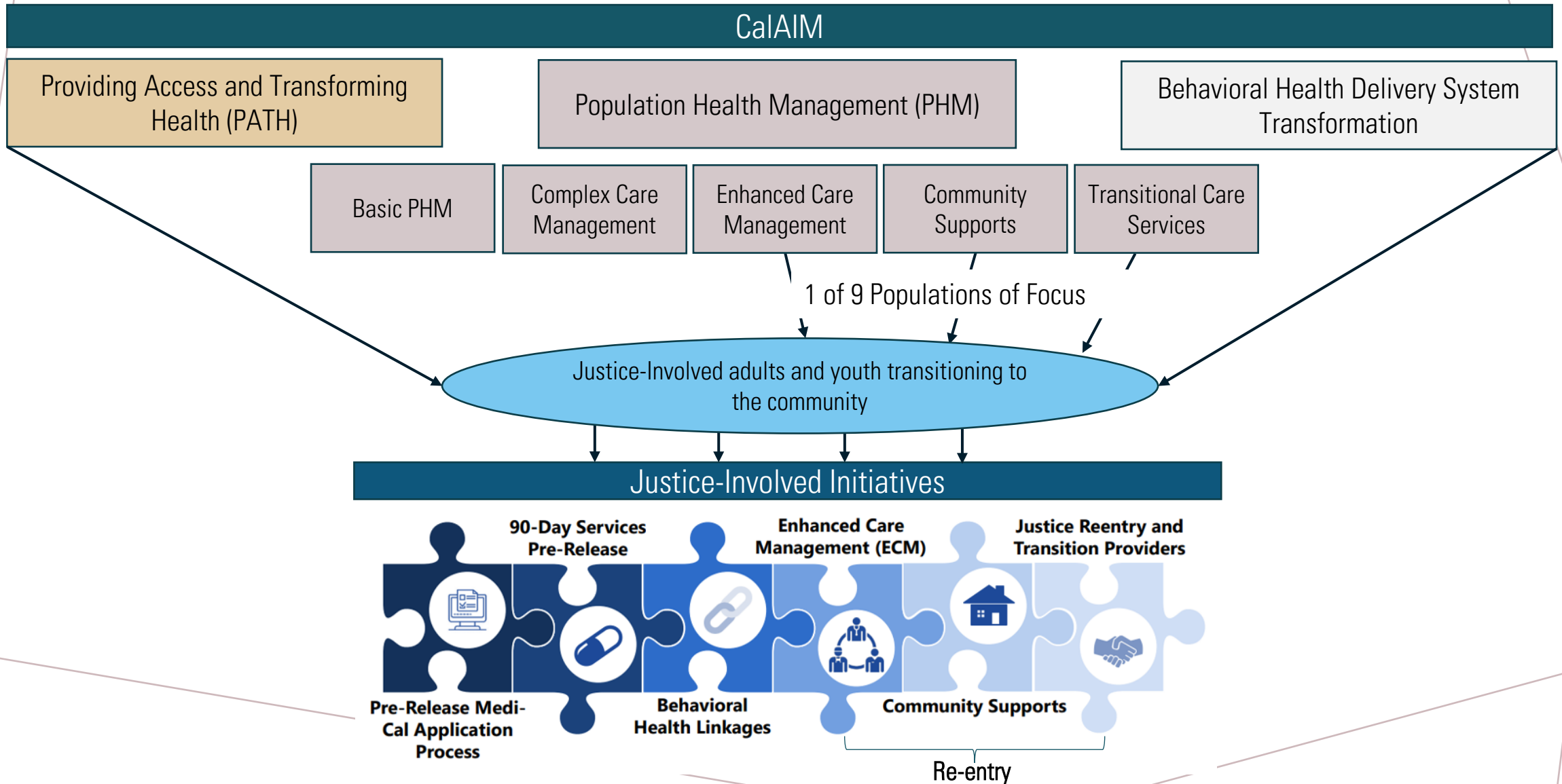
- 1. Understand the changing Medi-Cal landscape that will impact justice-involved (JI) individuals in California**
- 2. Understand the unique requirements for serving eligible JI individuals as an Enhanced Care Management (ECM) Provider**



A man with a beard, wearing a light blue button-down shirt, is seated on a grey couch in a modern living room. He is looking towards a woman on the right, who has long dark braids and is wearing a light pink top. To the left, the back of another man's head and shoulders is visible; he is wearing a blue denim shirt. The background features a light-colored wooden shelving unit with various decorative items, including a framed picture, a lamp, and a vase. A green plant is visible on the far left.

*CalAIM Justice Involved (JI)
Initiatives Overview*

CaAIM Justice-Involved Initiatives Overview



CalAIM Justice-Involved Initiatives

Goal



Advance health equity: The issue of poor health, health outcomes, and death for incarcerated people is a health equity issue because Californians of color are disproportionately incarcerated—including for mental health and SUD-related offenses. These individuals have considerable health care needs but are often without care and medications upon release.

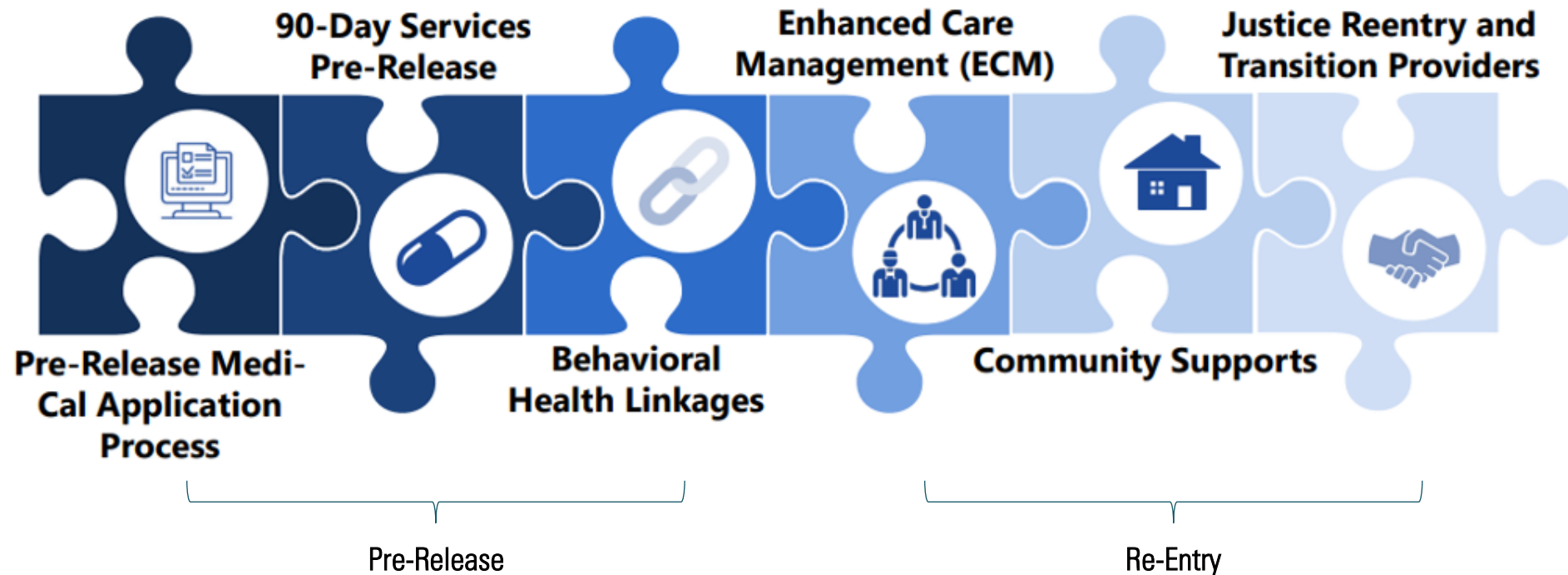


Improve health outcomes: By implementing this initiative, California aims to provide a targeted set of services in the pre-release period to establish a supportive community reentry process, help individuals connect to physical and behavioral health services upon release, and ultimately improve physical and behavioral health outcomes.

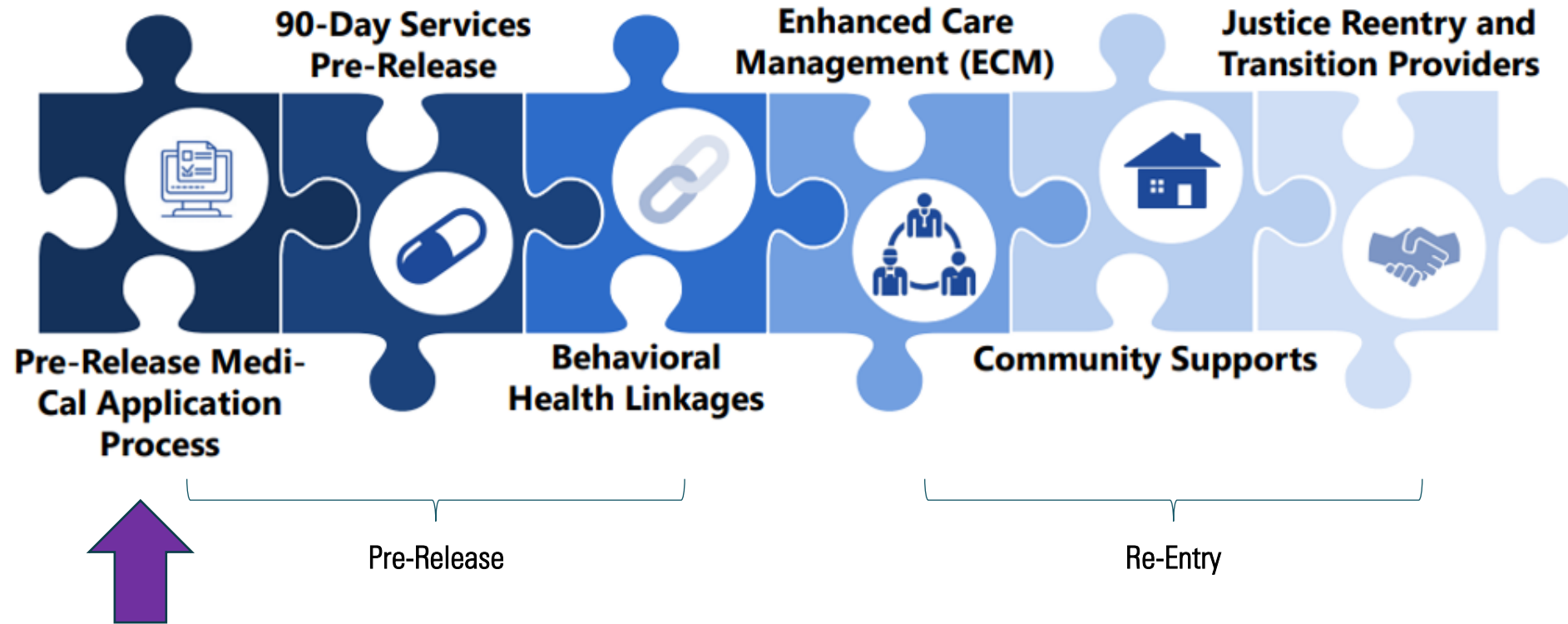


Serve as a model for the rest of the nation: California is the first state to receive approval for this initiative. We hope our model will serve as a blueprint for the dozen additional states with pending justice-involved 1115 waivers.

CalAIM Justice-Involved Initiatives Components

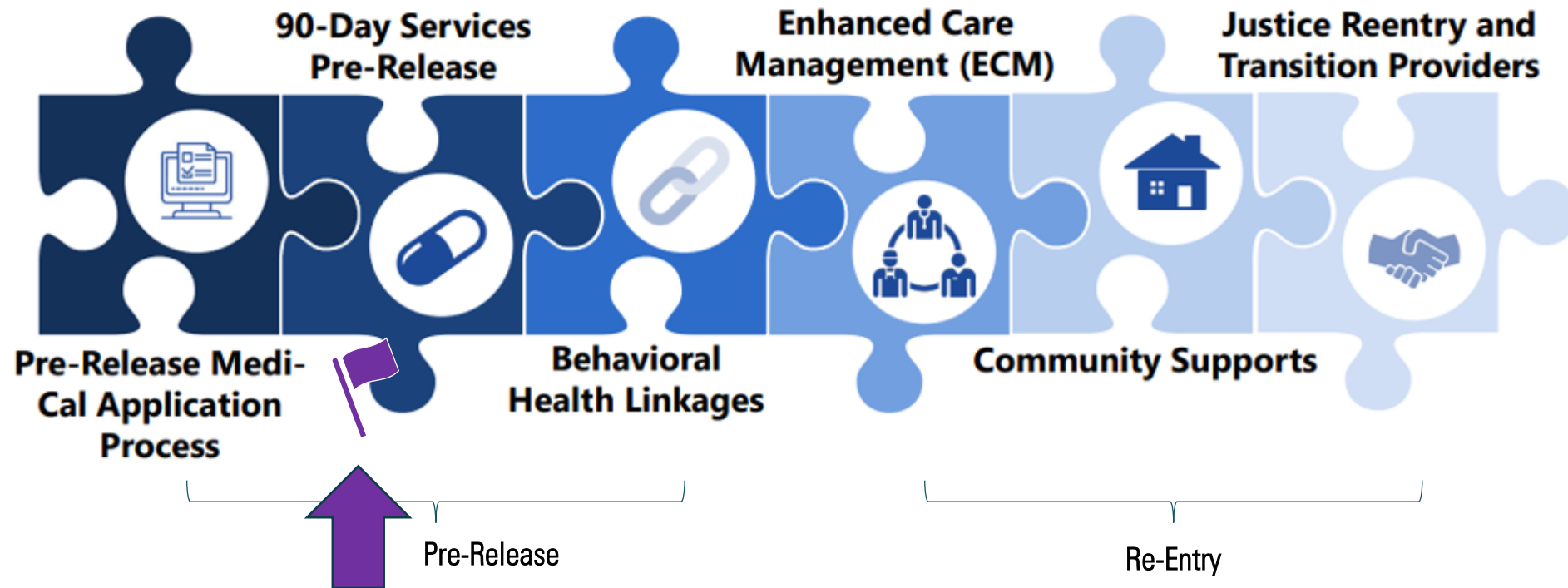


CalAIM Justice-Involved Initiatives Components



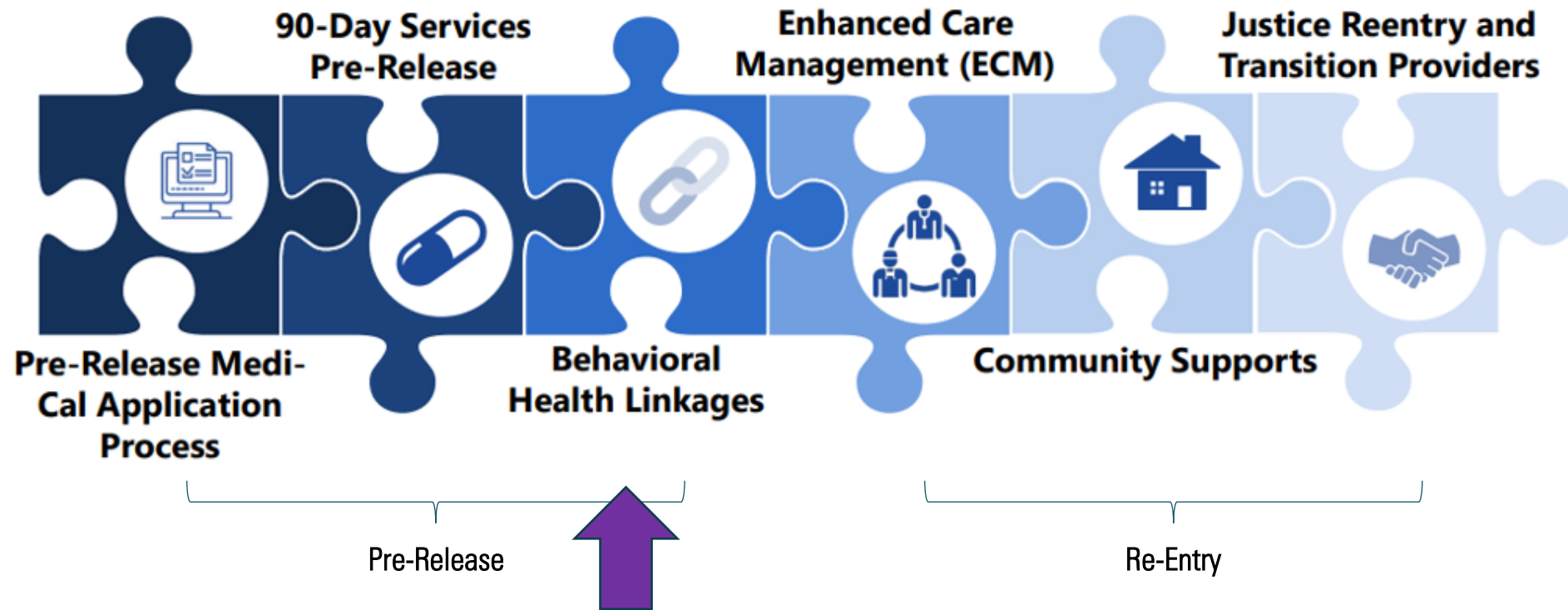
Medi-Cal enrollment for eligible individuals prior to release

CalAIM Justice-Involved Initiatives Components



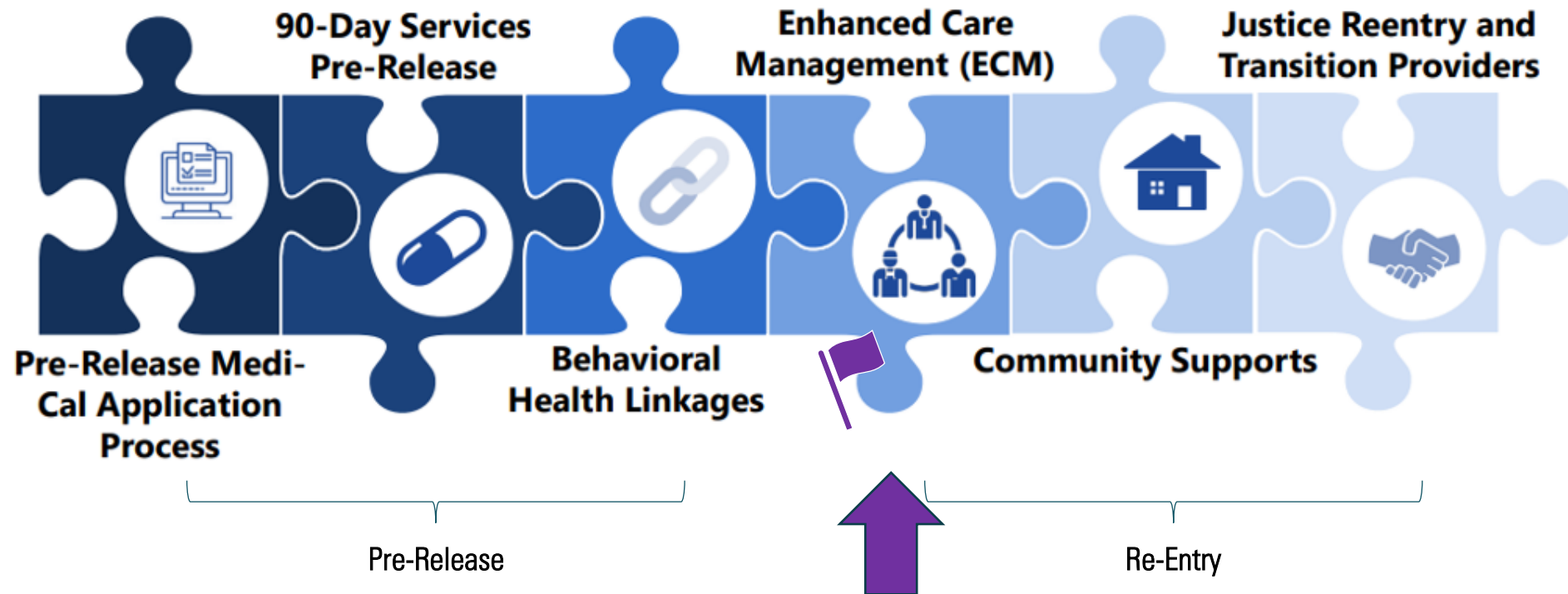
Medi-Cal coverage for certain services prior to release

CalAIM Justice-Involved Initiatives Components



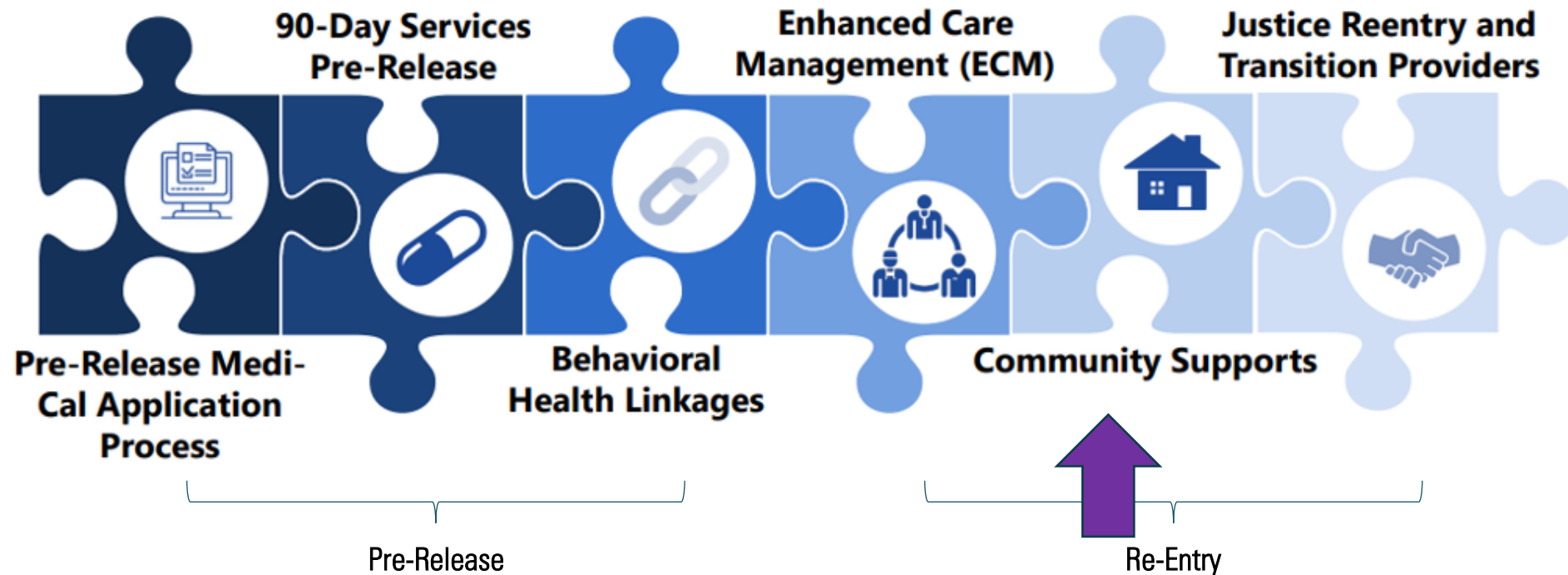
Collaboration between pre- and post-release behavioral health providers

CalAIM Justice-Involved Initiatives Components



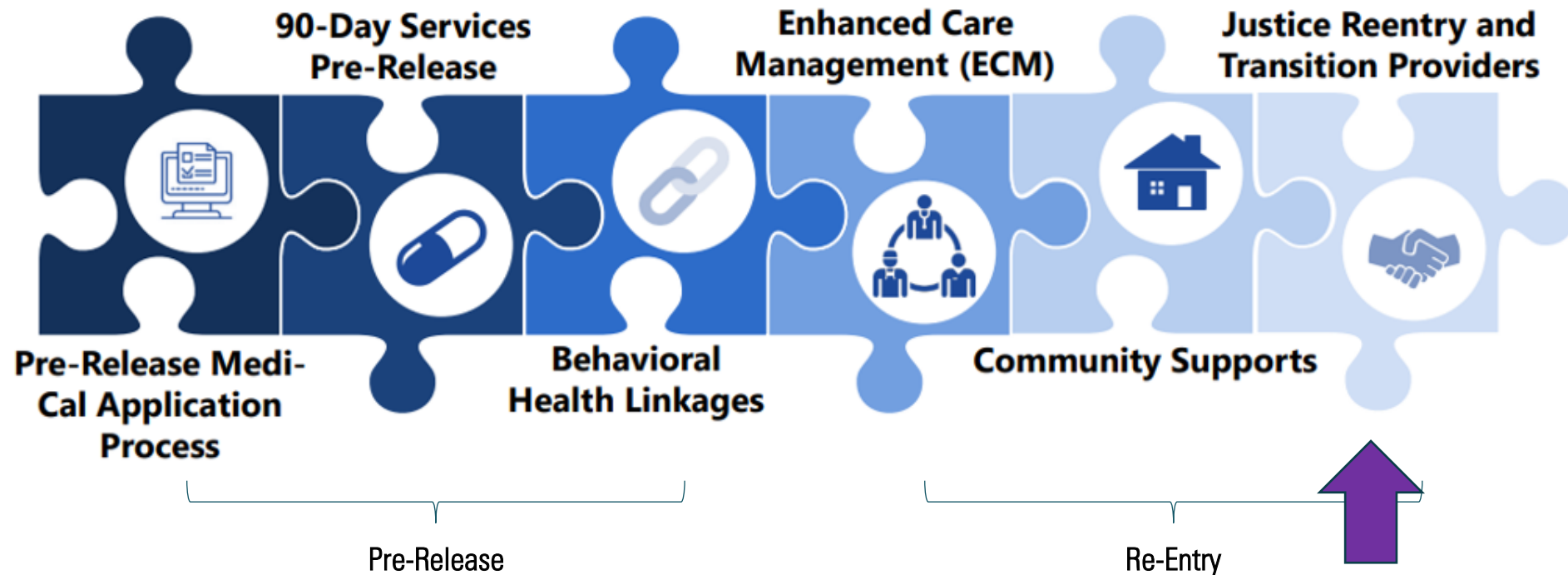
**Case management for individuals with complex needs
(managed care plan benefit for select “Populations of Focus”)**

CalAIM Justice-Involvement Initiatives Components



**Supports to address individuals' social needs, including food and housing
(optional for managed care plans to implement)**

CalAIM Justice-Involved Initiatives Components



Experienced and trusted providers play an important role



90-Day Pre-Release Services

90-Day Pre-Release Services Overview

California is **first in the nation** to receive approval from the Federal government to offer a **targeted set of services** to incarcerated and detained individuals on Medicaid (Medi-Cal) **90 days prior to release**



The intent of the demonstration is to **build a bridge to community-based care for justice-involved Medi-Cal members**, offering them services to stabilize their condition(s) and establishing a re-entry plan for their community-based care prior to release.



This demonstration is **part of California's comprehensive initiative to improve physical and behavioral health care for the justice-involved population** and builds on the State's substantial experience and investments on ensuring continuity of Medi-Cal coverage and access to care for JI populations.



With its 1115 demonstration, California will directly test and evaluate its expectation that **providing targeted pre-release services to Medi-Cal-eligible individuals will avert the unnecessary use** of inpatient hospitals, psychiatric hospitals, nursing homes, emergency departments and other forms of costly and inefficient care that otherwise would be paid for by Medi-Cal.

California Department of Health Care Services

**Policy and Operational Guide for
Planning and Implementing
CalAIM Justice-Involved Reentry
Initiative**

DRAFT FOR STAKEHOLDER REVIEW:
June 2023



- **“How to” guide for implementing 90-day pre-release services**
 - Remains in draft form
- **Final version expected in August 2023**

<https://www.dhcs.ca.gov/provgovpart/pharmacy/Documents/CalAIM-JI-Policy-and-Operations-Guide-Stakeholder-Comment-June-2023.pdf>

Where will 90-Day Pre-Release Services be Provided?

County Adult
Correctional Facilities

Sheriff's Offices

County Youth
Detention Facilities

Probation Offices

State Prisons

California Department
of Corrections and
Rehabilitation

Who is Eligible for 90-Day Pre-Release Services?

Medi-Cal Eligible:

- Adults
- Parents
- Youth under 19
- Pregnant or postpartum
- Aged
- Blind
- Disabled
- Current children and youth in foster care
- Former foster care youth up to age 26

CHIP Eligible:

- Youth under 19
- Pregnant or postpartum



Criteria for Pre-Release Medi-Cal Services

Incarcerated individuals must meet the following criteria to receive in-reach services:

- ✓ Be part of a **Medicaid or CHIP Eligibility Group** and
- ✓ Meet **one** of the following health care need criteria (for adults):
 - Mental illness
 - Substance use disorder (SUD)
 - Chronic condition/significant clinical condition
 - Intellectual or developmental disability (I/DD)
 - Traumatic brain injury
 - HIV/AIDS
 - Pregnant or postpartum

Note: All incarcerated youth are able to receive pre-release services and do not need to demonstrate a health care need.

What Services are Covered Under 90-Day Pre-Release?

- Reentry case management services;
- Physical and behavioral health clinical consultation services provided through telehealth or in-person, as needed, to diagnose health conditions, provide treatment, as appropriate, and support pre-release case managers' development of a post-release treatment plan and discharge planning;
- Laboratory and radiology services;
- Medications and medication administration;
- Medications for addiction treatment (MAT), for all Food and Drug Administration-approved medications, including coverage for counseling; and
- Services provided by community health workers with lived experience.



In addition to the pre-release services specified above, qualifying members will also receive **covered outpatient prescribed medications and over-the-counter drugs** (a minimum 30-day supply as clinically appropriate, consistent with the approved Medicaid State Plan) and **durable medical equipment (DME)** upon release, consistent with approved state plan coverage authority and policy.

Purpose of Care Management for Justice-Involved Individuals



Support the coordination of services delivered during the pre-release period and upon reentry



Ensure smooth linkages to services and supports



Ensure arrangement of appointments and timely access to appropriate care delivered in the community

Coupled with evidence-based approaches, such as:

- **Trauma-informed care**
- **peer support**
- **family reunification**

discussed on prior webinars in this series

Pre-Release Care Manager Requirements



Completion of whole-person needs assessment (documented in medical record)



Creation of care linkages and coordination with community-based providers and services



Participation in warm handoff encounter (when the pre-release care manager is different from post-release care manager)



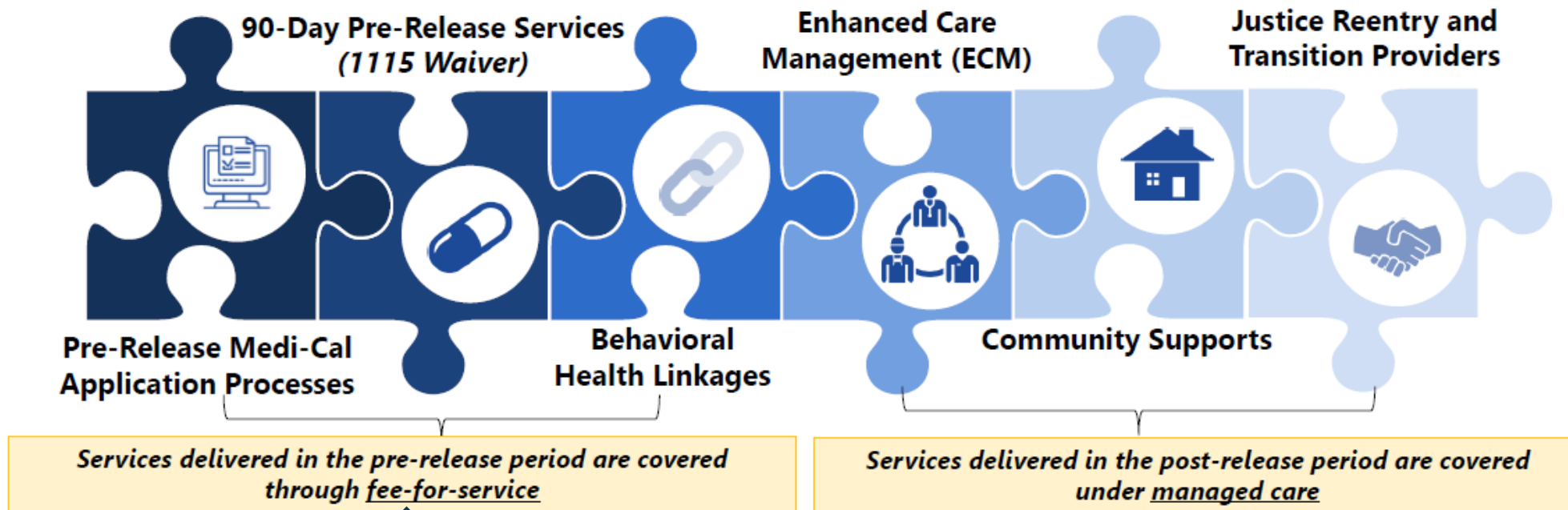
Completion of a reentry care plan (documented in medical record)

Behavioral Health Linkages

- **Screening for behavioral health needs**
- **Initiation of behavioral health services during incarceration/detention**
- **Link pre- and post-release behavioral health providers**
- **Ensure smooth transition and continuity of care (critical!)**



90-Day Pre-Release Services Reimbursement Model



Providers engaged in pre-release services (including Care Managers) will be reimbursed through Medi-Cal Fee-for-Service

90-Day Pre-Release Services Summary

- **Transformation of care in California correctional facilities is coming soon**
 - Standardization of services across facilities
 - Medi-Cal coverage for targeted services
- **Timeline (determined by correctional entities)**
 - No earlier than April 1, 2024
 - No later than March 31, 2026
- **Key Partners**
 - Correctional facilities (Sheriff, Probation, CDCR)
 - County agencies (Behavioral Health, Social Services, Etc.)
 - Health care providers
 - Community-based reentry providers



Enhanced Care Management

CalAIM Care Management Continuum

ECM is a community-based managed care benefit!



Enhanced Care Management (ECM) is for the **highest-need Members** and provides intensive coordination of health and health-related services.

Complex Care Management (CCM) is for Members at **higher- and medium-rising risk** and provides ongoing chronic care coordination, interventions for temporary needs, and disease-specific management interventions.

Basic Population Health Management (BPHM). BPHM is the array of programs and services for **all** MCP Members, including care coordination and comprehensive wellness and prevention programs, all of which require a strong connection to primary care.

ECM Core Services



Outreach and Engagement



Member and Family Supports



Comprehensive Assessment and Care Management Plan



Health Promotion



Enhanced Coordination of Care



Comprehensive Transitional Care



Coordination of and Referral to Community and Social Support Services

Similar to services provided by *Pre-Release Care Managers*

Community Supports

- **Community-based supports to address individuals' social needs**
- **Medically appropriate, cost-effective alternative services or settings**
- **Managed care plans are strongly encouraged (but not required) to offer**
- **ECM providers support linkages**

1. **Housing Transition Navigation Services**
2. **Housing Deposits**
3. **Housing Tenancy and Sustaining Services**
4. **Short-Term Post-Hospitalization Housing**
5. **Recuperative Care (Medical Respite)**
6. **Respite Services**
7. **Day Habilitation Programs**
8. **Nursing Facility Transition/Diversion to Assisted Living Facilities**
9. **Community Transition Services/Nursing Facility Transition to a Home**
10. **Personal Care and Homemaker Services**
11. **Environmental Accessibility Adaptations (Home Modifications)**
12. **Meals/Medically-Tailored Meals or Medically-Supportive Foods**
13. **Sobering Centers**
14. **Asthma Remediation**

Who is Eligible for ECM Services?

January 1, 2024: statewide launch for individuals transitioning from incarceration

ECM Population of Focus		Adults	Children & Youth
1	Individuals Experiencing Homelessness	✓	✓
2	Individuals At Risk for Avoidable Hospital or ED Utilization	✓	✓
3	Individuals with Serious Mental Health and/or Substance Use Disorder Needs	✓	✓
4	Individuals Transitioning from Incarceration	✓	✓
5	Adults Living in the Community and At Risk for LTC Institutionalization	✓	
6	Adult Nursing Facility Residents Transitioning to the Community	✓	
7	Children and Youth Enrolled in California Children's Services (CCS) or CCS Whole Child Model (WCM) with Additional Needs Beyond the CCS Condition		✓
8	Children and Youth Involved in Child Welfare		✓
9	Birth Equity Population of Focus	✓	✓

ECM is a community-based managed care benefit!

ECM Eligibility Criteria for JI Population of Focus (and 90-day Pre-Release Services)

Individuals transitioning from correctional setting (or who have transitioned within the past 12 months):

Medi-Cal Eligible:

- Adults
- Parents
- Youth under 19
- Pregnant or postpartum
- Aged
- Blind
- Disabled
- Current children and youth in foster care
- Former foster care youth up to age 26

CHIP Eligible:

- Youth under 19
- Pregnant or postpartum



Criteria for Pre-Release Medi-Cal Services

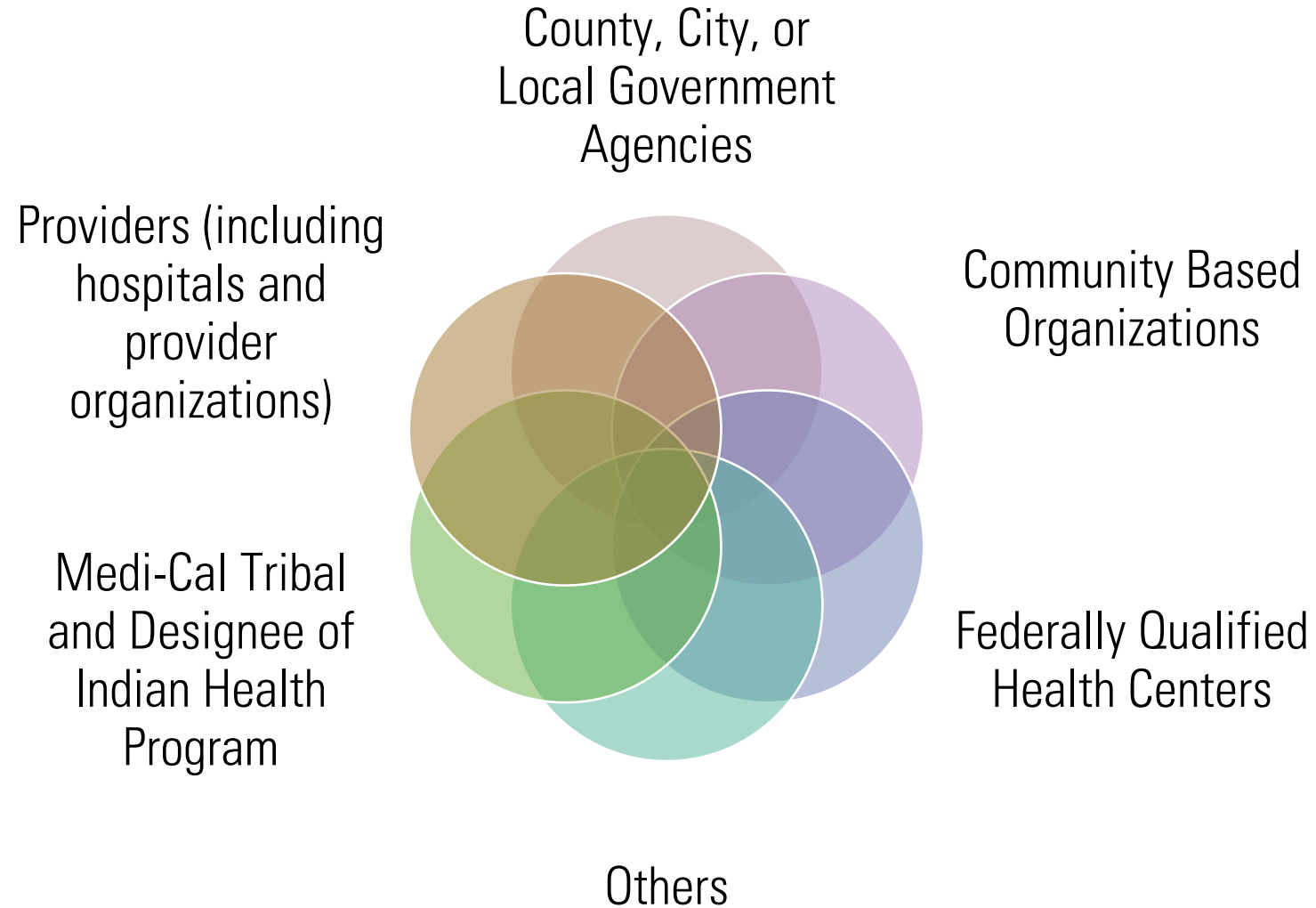
Incarcerated individuals must meet the following criteria to receive in-reach services:

- ✓ Be part of a **Medicaid or CHIP Eligibility Group** and
- ✓ Meet **one** of the following health care need criteria (for adults):
 - Mental illness
 - Substance use disorder (SUD)
 - Chronic condition/significant clinical condition
 - Intellectual or developmental disability (I/DD)
 - Traumatic brain injury
 - HIV/AIDS
 - Pregnant or postpartum

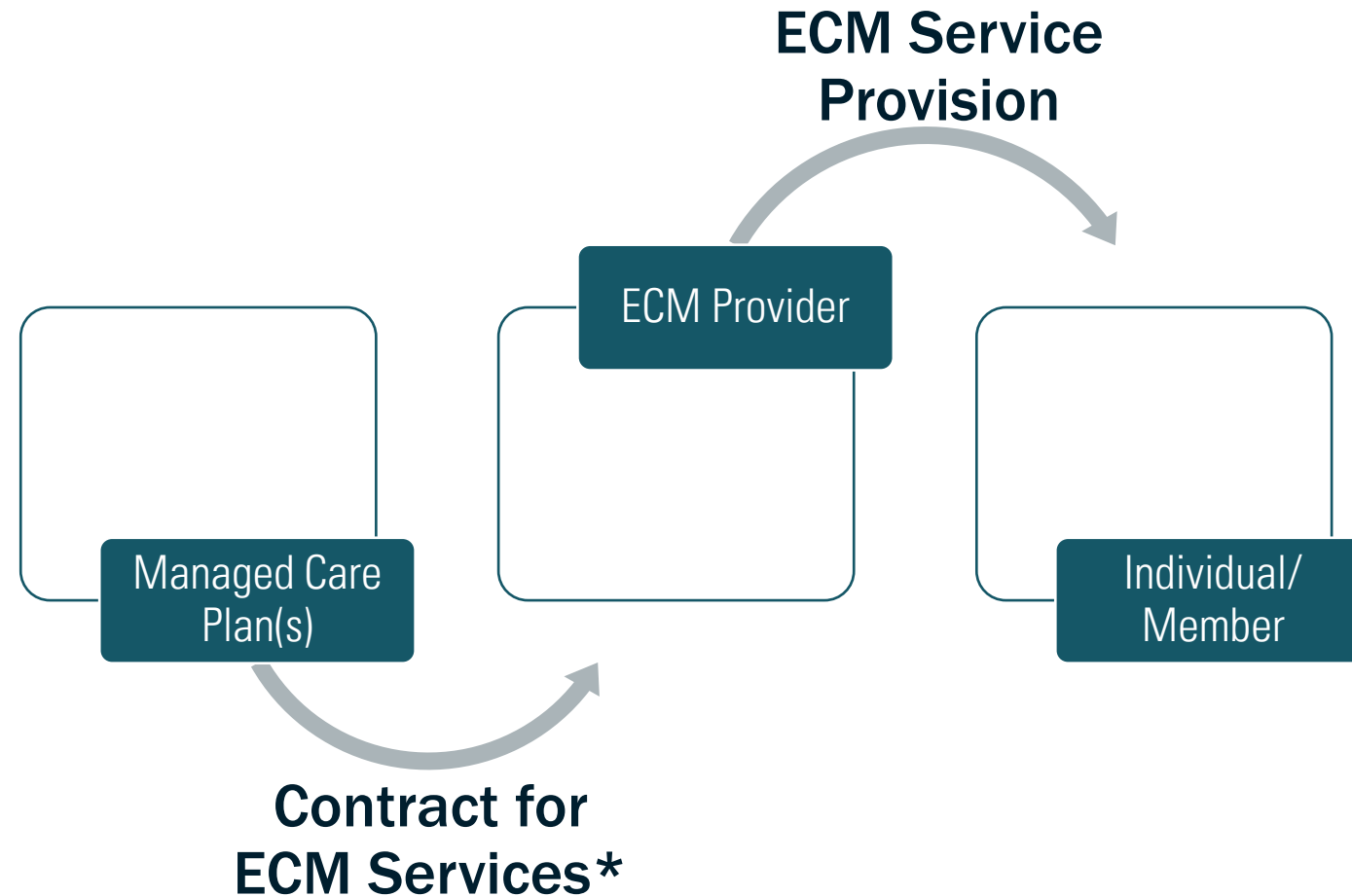
Note: All incarcerated youth are able to receive pre-release services and do not need to demonstrate a health care need.

Eligibility criteria to receive ECM services under the JI POF are the same as to receive pre-release services, so everyone who is eligible to receive pre-release services will also be eligible to receive ECM.

What Entities Provide ECM Services?



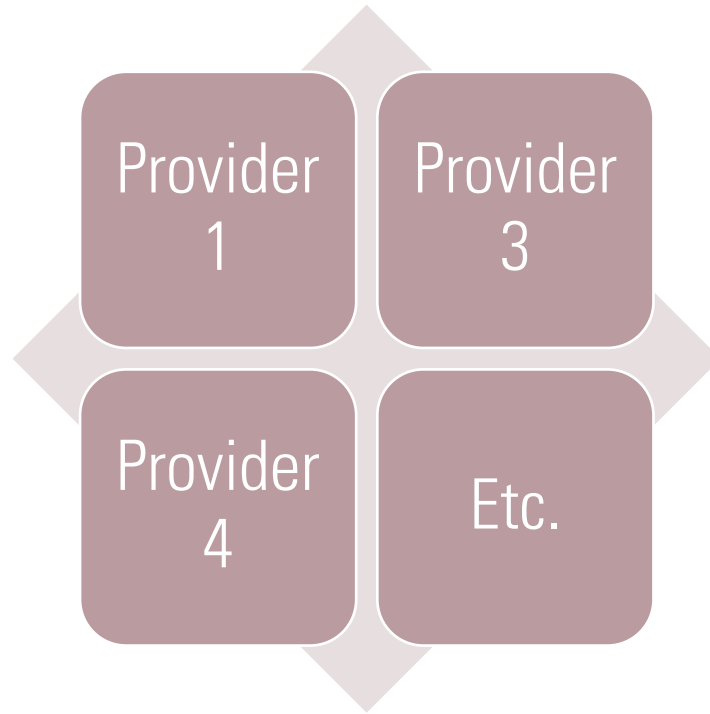
How are ECM Services Provided?



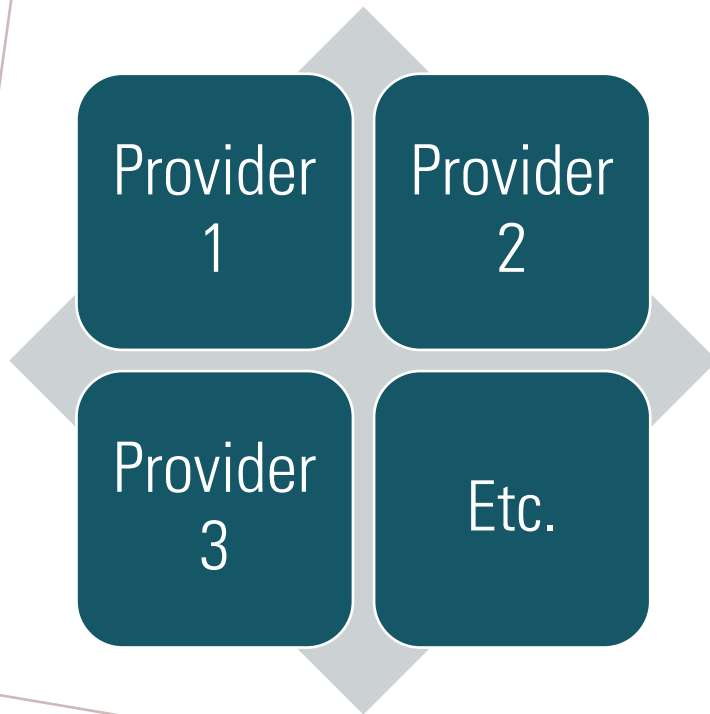
**Please contact your MCP(s) if you are interested in serving the JI Population of Focus*

ECM Provider Networks

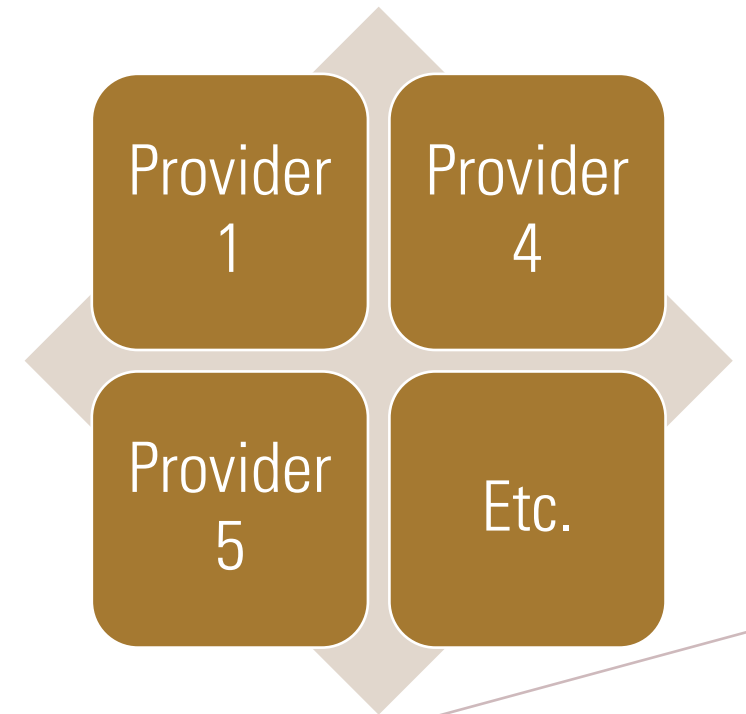
Individuals Transitioning from Incarceration



Individuals Experiencing Homelessness



Individuals with Serious Mental Health or SUD Needs



**CALAIM
ENHANCED CARE
MANAGEMENT
POLICY GUIDE**

Updated July 2023



*Serving the Justice-Involved
Population Of Focus*

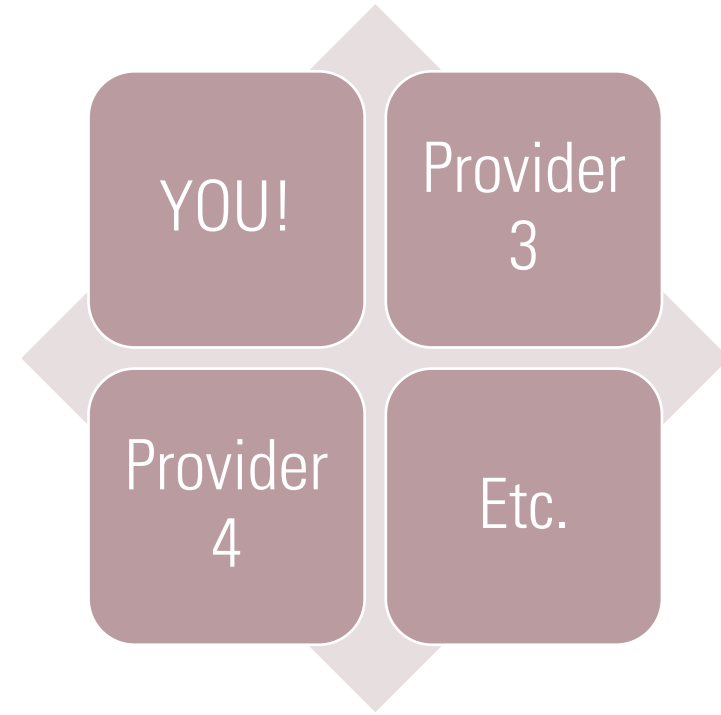
How do I Serve Justice-Involved Individuals Under CalAIM?

BECOME AN ECM PROVIDER TO:

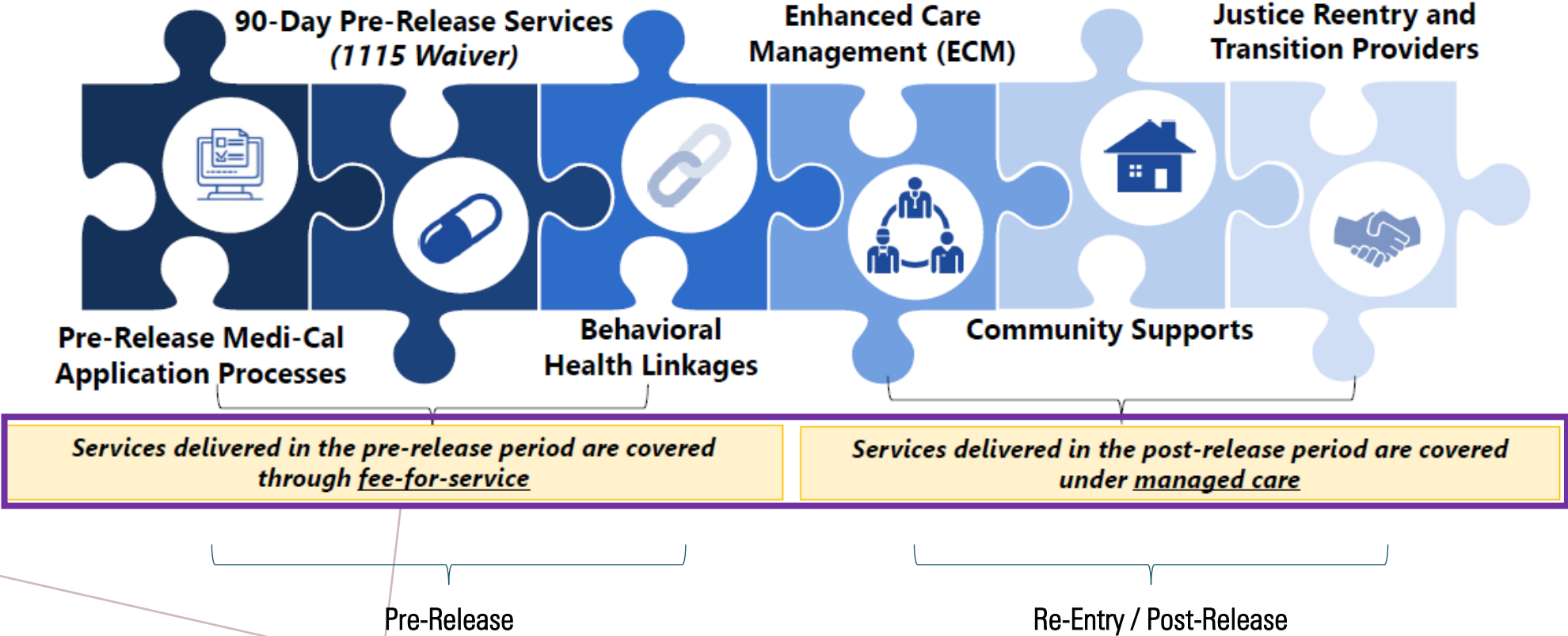
- Provide Pre-Release Care Management (through in-reach or warm handoffs)
- Provide Post-Release Care Management (aka ECM services)

*Note: MCPs will assess all providers to ensure they can serve the JI POF
=> please contact your Health Net point of contact for more information*

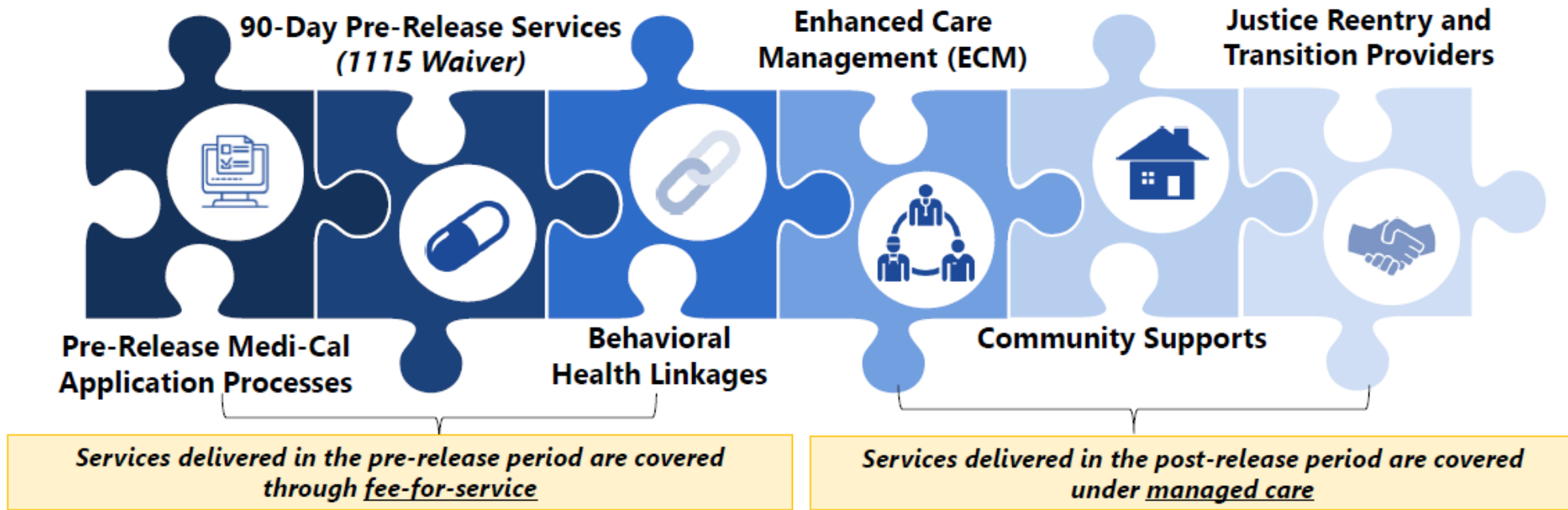
Individuals Transitioning from Incarceration



Care Management Reimbursement



Care Management Models: Pre- and Post-Release



In-Reach:
(best practice)

Community-Based Care Management Provider

Embedded:

Embedded Care Management Provider → Warm handoff → Community-Based Care Management Provider

Who Assigns the Care Manager?

Correctional facilities assign the care manager and select among the ECM provider network

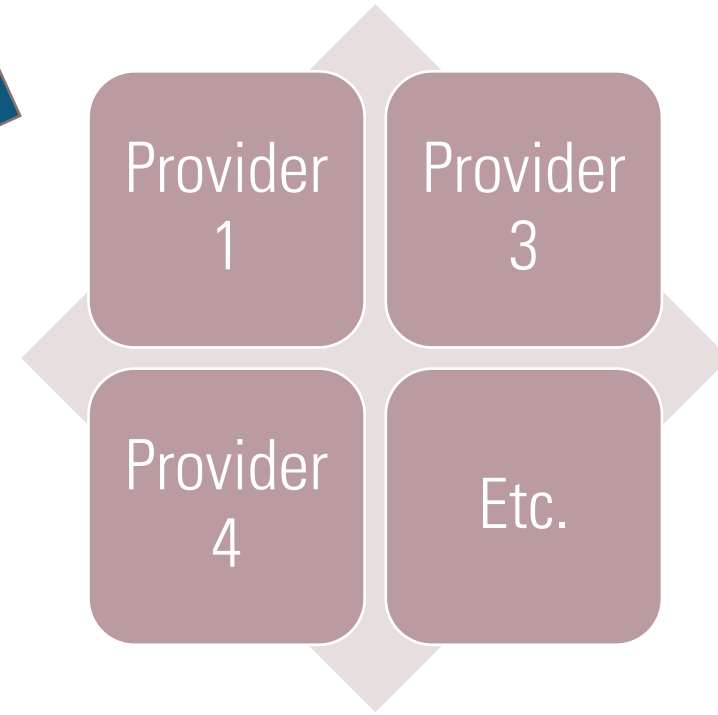
In-Reach Model

Provide pre-release care management and stay with individual post-release as their ECM provider

Embedded Model

Engage in warm handoff during pre-release and provide ECM services release

Individuals Transitioning from Incarceration



Care Management for JI Individuals Summary

Care Management Model	Pre-Release (Pre-Release Care Management)	Post-Release (Community-Based Care Management aka ECM Services)
In-Reach	<ul style="list-style-type: none"> • ECM Provider serves as Pre-Release Care Manager* • Fee-for-service reimbursement (requires enrollment as a fee-for-service Medi-Cal provider) 	<ul style="list-style-type: none"> • ECM Provider serves as Community-Based Care Management Provider* (same as Pre-Release Care Manager) • Managed care reimbursement (requires MCP contract)
Embedded	<ul style="list-style-type: none"> • Correctional facility (or their vendor) serves as Pre-Release Care Manager • <i>ECM Provider engages in “warm handoffs” to support transition to post-release ECM services</i> • Fee-for-service reimbursement (requires enrollment as a fee-for-service provider Medi-Cal) 	<ul style="list-style-type: none"> • ECM Provider serves as Community-Based Care Management Provider* • Managed care reimbursement (requires MCP contract)

*Assigned by correctional facility among the ECM Provider Network

Managed Care Plan Requirements for the JI POF ECM Network

Establish a network of ECM providers that meet minimum requirements to service the JI population of focus

Pursue overlap and ensure network sufficiency of the JI ECM provider network across MCPs in each County

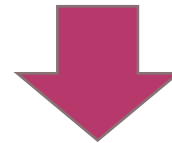
Publish JI ECM provider network directory
(for use by correctional facilities to assign a Care Manager)

Managed Care Plan Requirements for the JI POF ECM Network

Establish a network of ECM providers that meet minimum requirements to service the JI population of focus

Pursue overlap and ensure network sufficiency of the JI ECM provider network across MCPs in each County

Publish JI ECM provider network directory
(for use by correctional facilities to assign a Care Manager)



JJ ECM Providers are expected to contract with all MCPs

JI ECM Provider Requirements

Enroll through State-Level Medi-Cal Enrollment Pathway

enroll as Fee-For-Service Medi-Cal Provider through PAVE*

Ensure Each Member is Assigned a Lead Care Manager

In reach model: same as PRCM
Embedded model: warm handoff with PRCM

Provide Culturally Appropriate and Timely In-Person Care Management Activities

Use Care Management System or Process Supporting Documentation of Integrated Services and Information

Have Formal Agreements/ Processes to Engage and Cooperate with Other Entities to Coordinate Care

including with correctional facilities

Have Experience Serving the POF

MCPs will prioritize contracting with providers employing individuals with lived experience, including CHWs

Have Experience Providing Core ECM-Like Services

Submit Claims, or Invoices, for the Provision of ECM-related Services to MCP

***DHCS is developing Medi-Cal enrollment pathway for CBOs that serve as JI ECM providers in PAVE**

JI ECM Provider Requirements

Enroll through State-Level Medi-Cal Enrollment Pathway

enroll as Fee-For-Service Medi-Cal Provider through PAVE

Ensure Each Member is Assigned a Lead Care Manager

In reach model: same as PRCM
Embedded model: warm handoff with PRCM

Have Formal Agreements/ Processes to Engage and Cooperate with Other Entities to Coordinate Care

including with correctional facilities

Have Experience Serving the POF

MCPs will prioritize contracting with providers employing individuals with lived experience, including CHWs

- **Fee-for-Service (FFS) Medi-Cal will cover Pre-Release Care Management services, including warm handoffs to ECM Providers**
- **ECM Providers will enroll in Medi-Cal as FFS CBO Providers**
- **PAVE Portal enrollment instructions are forthcoming**

****DHCS is developing Medi-Cal enrollment pathway for CBOs that serve as JI ECM providers in PAVE***

JI ECM Provider Requirements

Enroll through State-Level Medi-Cal Enrollment Pathway

enroll as Fee-For-Service Medi-Cal Provider through PAVE

Ensure Each Member is Assigned a Lead Care Manager

In reach model: same as PRCM
Embedded model: warm handoff with PRCM

Have Formal Agreements/ Processes to Engage and Cooperate with Other Entities to Coordinate Care

including with correctional facilities

Have Experience Serving the POF

MCPs will prioritize contracting with providers employing individuals with lived experience, including CHWs

- For in-reach model, the Pre-Release Care Manager will be the same as the ECM Provider (Community-Based Care Manager)
- For embedded model, the ECM Provider will engage in a warm handoff with the Pre-Release Care Manager pre-release

JI ECM Provider Requirements

Enroll through State-Level Medi-Cal Enrollment Pathway

enroll as Fee-For-Service Medi-Cal Provider through PAVE

Ensure Each Member is Assigned a Lead Care Manager

In reach model: same as PRCM
Embedded model: warm handoff with PRCM

Have Formal Agreements/ Processes to Engage and Cooperate with Other Entities to Coordinate Care

including with correctional facilities

Have Experience Serving the POF

MCPs will prioritize contracting with providers employing individuals with lived experience, including CHWs

- **Regardless of the care management model, agreements/processes will need to be established with each correctional facility**
- **Further information forthcoming**

JI ECM Provider Requirements

Enroll through State-Level Medi-Cal Enrollment Pathway

enroll as Fee-For-Service Medi-Cal Provider through PAVE

Ensure Each Member is Assigned a Lead Care Manager

In reach model: same as PRCM
Embedded model: warm handoff with PRCM

Have Formal Agreements/ Processes to Engage and Cooperate with Other Entities to Coordinate Care

including with correctional facilities

Have Experience Serving the POF

MCPs will prioritize contracting with providers employing individuals with lived experience, including CHWs

- **Individuals with lived experience serve as trusted providers**
- **Employing individuals with lived experience is considered a best practice (rather than a requirement)**

JJ ECM Provider Checklist (Beginning January 1, 2024)



Establish contracts with all MCPs in your county



Enroll as a Fee-for-Service Medi-Cal Provider through PAVE



Establish agreements/processes with correctional facilities



Employ individuals with lived experience when possible



*Capacity Building
Funding Opportunities*

Capacity Building Funding Opportunities

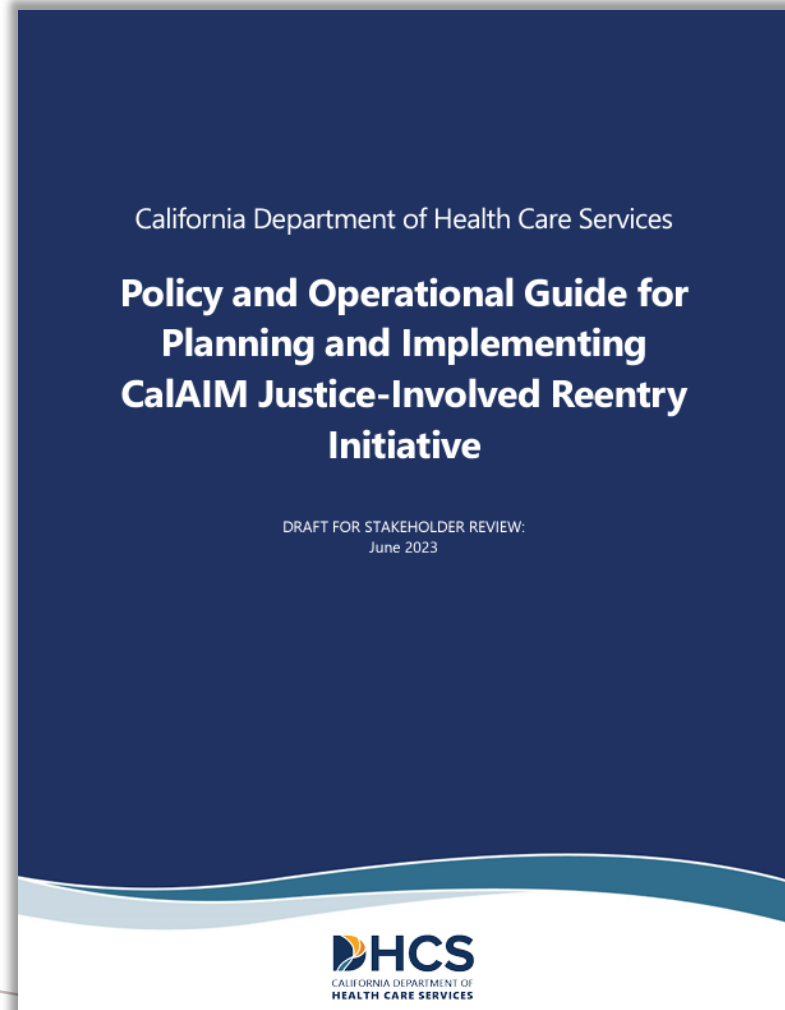
Capacity and Infrastructure Transition, Expansion, and Development (CITED) Initiative	Technical Assistance Initiative (TA Marketplace)	Collaborative Planning and Implementation Initiative (Regional Collaboratives)	Incentive Payment Program (IPP)
Direct funding to support the delivery of ECM and CS services	Virtual “marketplace” offering hands-on technical support and off-the-shelf resources from vendors to establish the infrastructure needed to implement ECM and CS	Funding for regional collaborative planning and implementation efforts to promote readiness for ECM and CS	Funding to support implementation and expansion of CalAIM provided through Managed Care Plans

Visit: <https://www.dhcs.ca.gov/CalAIM/Pages/CalAIM-PATH.aspx>

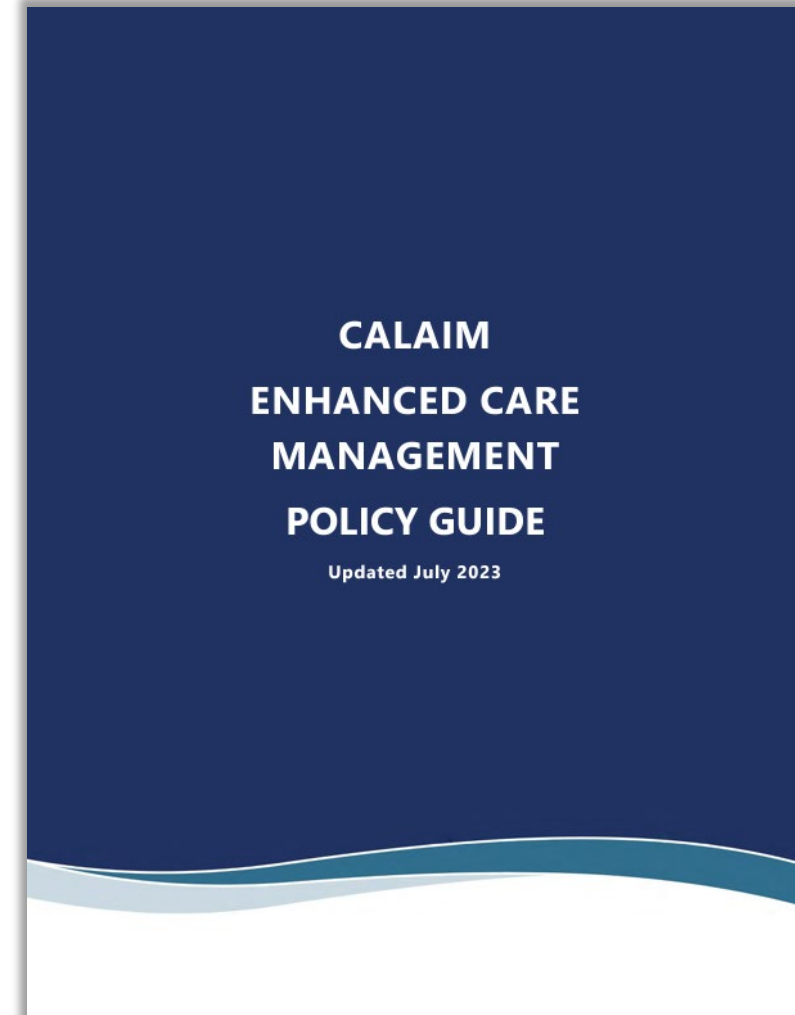
NEXT STEPS

1. Evaluate your organization's ability to serve as an ECM Provider for the JI population of focus
2. Meet with the MCP(s) in your county to discuss your interest in serving the JI population of focus as an ECM Provider
 - Existing Providers: meet with your Health Net point of contact
 - New Providers: systems_of_care_group@healthnet.com

Resources



<https://www.dhcs.ca.gov/provgovpart/pharmacy/Documents/CalAIM-JI-Policy-and-Operations-Guide-Stakeholder-Comment-June-2023.pdf>



<https://www.dhcs.ca.gov/Documents/MCQMD/ECM-Policy-Guide.pdf>

QUESTIONS



LET US KNOW YOUR THOUGHTS

Are you ready to become a JI ECM Provider?

- Yes! Where do I sign up?
- Yes, but want to learn more
- Not yet...
- Not applicable, I'm just here to learn

**Complete the pop-up questions on
your screen!**

THANK YOU!!!! Before You Go...

Please Complete the Evaluation of Today's Session

Once the webinar concludes, the survey will pop-up in a separate browser.