

# Payspan

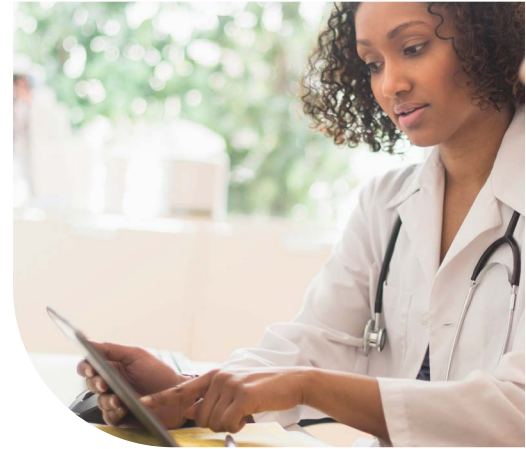
A FASTER, EASIER WAY TO GET PAID



Wellcare by Health Net (Health Net\*) offers Payspan Health, a no-cost solution that helps providers transition into electronic payments and automatic reconciliation.

## Using Payspan Health, you can:

- **Improve cash flow** by getting payments faster.
- **Settle claims electronically** through Electronic Fund Transfers (EFTs) and Electronic Remittance Advice (ERA).
- **Maintain control over bank accounts** by routing EFTs to the bank account(s) of your choice.
- **Match payments to advice quickly** and easily re-associate payments with claims.
- **Manage multiple payers** including any payers that are using Payspan to settle claims.
- **Eliminate re-keying of remittance data** by choosing how you want to receive remittance details.
- **Create custom reports** including automated clearing house summary reports, monthly summary reports, and payment reports sorted by date.



## How to set up your Payspan Health account

- 1 Call 877-331-7154, option 1, for your unique registration code.
- 2 Visit [PayspanHealth.com](https://PayspanHealth.com) and click *Register*.
- 3 Enter your registration code and click *submit*.
- 4 Enter your PIN, TIN or EIN, and NPI, then click *Start Registration*.
- 5 Populate the requested personal information and click *Next*.
- 6 Designate an account for fund transfers by completing the required fields and click *Next*.
- 7 Verify your information, check the box to agree to the service agreement, and click *Confirm*.

(continued)

- 8 Within a few business days, you will receive a deposit of less than \$1 from Payspan Health. Then follow these steps to complete registration:
  - Contact your financial institution to obtain the amount deposited by Payspan Health.
  - Log into Payspan Health and click *Payments*.
  - Click the *Account Verification* link to the left side of screen.
  - Enter the amount of the deposit in this format: 0.00.
  - The deposit does not need to be returned.
- 9 Congratulations, your registration is complete! For Payspan Health registration assistance, call 877-331-7154, option 1 or email [providersupport@payspanhealth.com](mailto:providersupport@payspanhealth.com).



## Set up your Payspan Account today

Visit [payspanhealth.com](https://payspanhealth.com) and click *Register*. You may need your National Provider Identifier (NPI) and Provider Tax ID Number (TIN) or Employer Identification Number (EIN).